



Centre For Print Research

Introduction to Woodbury Type and Woodbury Gravure Printing

Course Information - July 2023

Introduction to Woodbury Type and Woodbury Gravure Printmaking

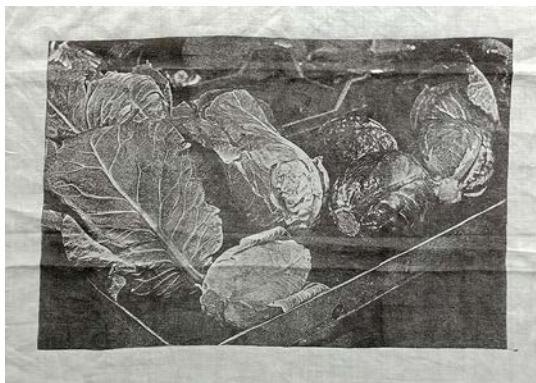
Led by: Susanne Klein and Harrie Fuller

Course Duration: 2 Days, 10am to 4pm

Dates: 27th - 28th July 2023

Price: £249.00 Full Price / £199.00 concessionary price

The course price includes all materials, PPE and catering.



ABOUT THE COURSE

Woodburytype was the first commercially successful photomechanical reproduction method. It was replaced by lithography in commercial printing. It is continuous tone and gives a very special image quality. The continuous tone Woodbury Gravure is even more obscure and has never taken off commercially. We will use the laser cutter to make plates for Woodburytype and Woodbury Gravure and print with gelatine inks and relief inks.

Participants will learn how to prepare images for Woodburytype and Woodbury Gravure. They will learn how to use the laser cutter, how to prepare inks for Woodburytype and what inks to use for Woodbury Gravure.

WHO IS IT FOR?

Photographers and printmakers who are interested in alternative photomechanical reproduction methods and anyone who is interested in using the laser cutter as a tool to make relief printing plates.

COURSE STRUCTURE

Day 1

Participants will learn how to prepare the images in photoshop so that the desired tonality of the image can be achieved. The image will be imported into Adobe Illustrator and prepared to be 'printed' by the laser cutter. Gelatine inks will be prepared with different pigments depending on the choice of paper for the final print. Paper will be prepared.

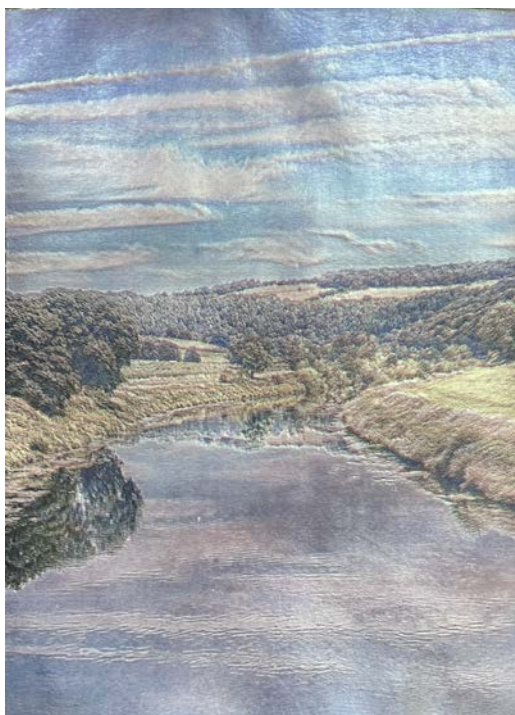
Day 2

The day will start off with printing of Woodburytypes. After lunch the same plates will be used for Woodbury Gravure. The participants will learn how to modify relief printing methods to achieve the best results.

Participants will gain confidence and proficiency using photographic black and white materials alongside and in addition to their printmaking practice.

HOW IS THE COURSE DELIVERED?

This will be a physical course, delivered in person at our UWE Frenchay Campus.



COURSE TUTORS

About: Susanne Klein

Susanne Klein is an EPSRC Manufacturing Fellow and an associate professor at the Centre for Print Research at the University of the West of England in Bristol, UK. In 1995 she became a Royal Society Fellow at the University of Bristol where she worked on 19th century optics. In 1998 she joined Hewlett Packard Labs and specialised in liquid crystal display technology and new materials for 3D printing.



Her research interests now are 19th century photomechanical processes, especially Woodburytype, Woodbury Gravure, Lippmann photography and colour photography based on Maxwell's three colour theory, including alternative ways of colour recording and reproduction.

About: Harrie Fuller

Harrie Fuller works at the CFPR as Dr Susanne Klein's Print Technician with a technical specialism in 19th century photomechanical printmaking methods. She helps to facilitate practical aspects of the EPSRC funded Woodbury and Lippmann project. The work focuses on reimagining traditional print techniques, with a key interest in investigating tone and structural colour. Before joining CFPR Harrie completed a BA in Fine Art at UWE Bristol, graduating in 2018.



Places are limited so please sign up early to secure your place.

BOOK HERE:

<https://store.uwe.ac.uk/short-courses/centre-for-print-research/cpd-courses>



Centre For Print Research